



ROOKHOW

Quaker Meeting House and Bunkbarn

Accessibility Guide for Rookhow

contactrookhow@gmail.com, 07377 971783, <https://rookhow.org.uk>

Contact for accessibility enquiries: Sue Nicholls



Welcome

Rookhow is a sole use self catering group accommodation set in 12 acres ancient oak woodland in the Lake District. 16 bed Bunkbarn, yurt and more space in the historic Grade II* listed Quaker Meeting House for additional sleeping and group activities. Campfire, outdoor seating and space to camp. Limit of 30 staying on site. Minimum 2 nights. Rookhow is a member of the Independent Hostels UK and a registered charity. Perfect for families, community organisations, schools, colleges and youth

groups, activity holidays, woodland workshops, celebrations and yoga retreats. We also subsidise vulnerable groups to stay at Rookhow through our Retreat Away scheme.

Watch the video: [Rookhow Quaker Meeting House and Bunkbarn](#)

At a Glance

Level Access

- There is level access from the main entrance to:
 - Toilet and shower area- Bunkbarn
 - Woodland

Access with steps

- There are steps from the main entrance to:
 - Bedroom
 - Open plan sitting room

Hearing

- Some staff have disability awareness training.

General

- Some staff have disability awareness training.

Getting here

Rookhow
Colton
ULVERSTON
LA12 8LA

Travel by public transport

- Rookhow is in the Rusland Valley, a rural part of the Lake District not served well by public transport. The nearest train station/ regular bus stop is Ulverston. 15-20 mins by taxi. We have an electric vehicle charging point at Rookhow.

Travel by taxi

- You can get a taxi with Paul's Taxis by calling 01229 586669. The taxi company has a wheelchair accessible vehicle.
- You can get a taxi with A2B by calling 01229 587030.

Parking

- We have a car park. The parking is less than 50 metres from the main entrance. Parking is free.
- There is a drop-off point at the main entrance. The drop-off point does not have a dropped kerb.

- From the car park to the entrance, there is level access. The route is 1200mm wide, or more.
- The ground is slightly uneven but wheelchair accessible into the Meeting House. The path up to the yurt and campfire can be accessed by a wheelchair but is sloping and winding.



Accessible pathway: side entrance of Meeting House



Bunkbarn

Arrival



Path to main entrance

- From the street to the main entrance, there is level access.
- The path is 1200mm wide, or more.



Main entrance

- The main entrance has level access.
- The door is 800mm wide.
- The main door is side hung and manual.

- The Bunkbarn is not wheelchair accessible and is on different levels, including the bedrooms and sitting room/kitchen. The Quaker Meeting House downstairs is wheelchair accessible with wider entrance door, accessible toilet and ambulant shower. This can be hired for day activities mid week.



Bunkbarn Hallway

Getting around inside

Visual Impairment - General Information



Bunkbarn sitting room and dining table



Bunkbarn sitting room



Upstairs bedrooms (2bed- singles; 6 bed- 2 bunks and 2 singles)



Downstairs 8 bedded room (4 bunks)

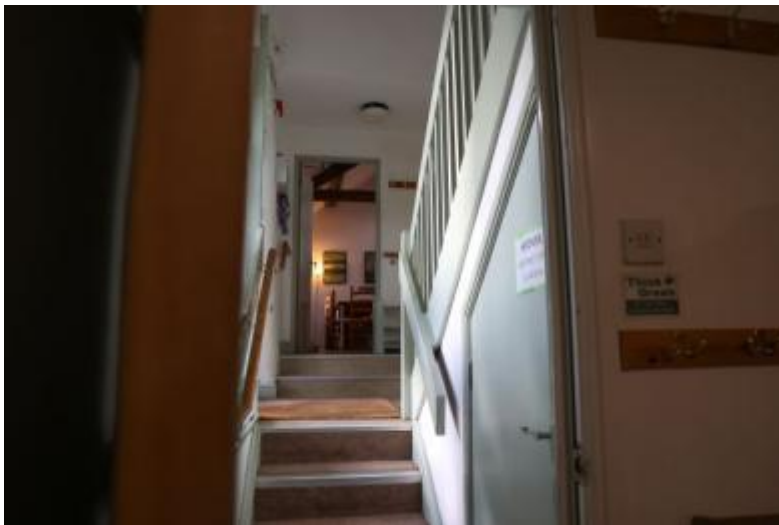
Bedrooms

- All bedrooms have windows.

- Bedrooms have ceiling lights and bedside lamps.
- Lights are LED. All bedrooms are non-smoking.
- Some bedrooms have fitted carpets.
- We have wi-fi free bedrooms, for visitors with electro-sensitivity.
- The bedroom nearest the main entrance has 4 steps.
- We have bathrooms with a separate shower.
- The direction of transfer onto the toilet is to the left and right.



Bunkbarn toilets and showers



Stairs to downstairs bedroom



Stairs to upstairs bedrooms

 *Self catering kitchen*

Open plan kitchen, dining and sitting area

- We have an open plan kitchen.
- From the main entrance to the kitchen, there are 3 steps. There is no lift and no ramp.



Bunkbarn kitchen



Well stocked kitchen

Lounge

Open plan sitting room

- From the main entrance to the lounge, there are 3 steps. There is no lift and no ramp.
- Open plan sitting room with 16 chairs at long table and about 10 comfy chairs. Narrow doorway at entrance- not wheelchair accessible and up 3 steps.

Toilet

Toilet and shower area- Bunkbarn

- There are 2 toilets and 3 showers
- From the main entrance to the public toilet, there is level access. The route is 800mm wide, or more.
- The toilet door is 800mm wide.
- The direction of transfer onto the toilet is to the left and right.
- There is 800mm at the side of the toilet. There is 1000mm in front of the toilet. The toilet seat is 420mm high. From the main entrance to the public toilet, there are 3 steps. There is no lift and no ramp.

Getting around outside

Woodland

- From the main entrance to the gardens, there is level access.
- The route is sloped. The route is 1200mm wide, or more.
- Level pathway around Bunkbarn into woods, then undulating path which narrows up to the campfire and yurt.
- Watch the video: [Rookhow's woodland](#)



Path into woods



Outside Bunkbarn



Quaker Meeting House front



Quaker Meeting House side door



Campfire

Customer care support

Customer care support

- Some staff have disability awareness training.

Guide last updated: 27 June 2024